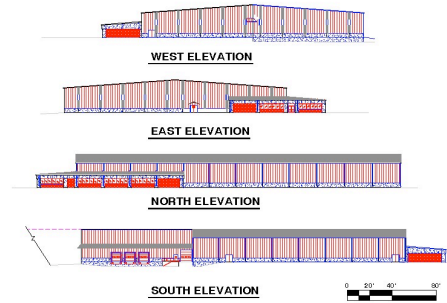




**Griffiss Shell Building**  
**54,700 Square Feet Available**  
**County: ONEIDA**

Former Use: NA  
 Zoning: Planned development  
 Price: \$1,400,000  
 Lease: \$2.50  
 Terms: N/A



[View Map/GIS Data](#) [County Profile Data](#) [Additional Images](#)

Features	Square Footage	Ceiling Ht. Center (ft)	Ceiling Ht. Eaves (ft)	Column Spacing (ft)	Floor Thickness (in)	Air Conditioned	Sprinkler System
Manufacturing	48,400	32.00	24.00	25.00x50.00	0.00	No	No
Office	6,300	N/A	N/A	N/A	N/A	No	No

**Specifications**

Total Square Feet: 54,700  
 Multiple Tenants: No  
 Sub-Division Permitted: N/A  
 Acres/Additional Acres: 5.00 / 15.00

**Construction**

Built: 2000  
 Additions: 2000  
 Exterior: Metal  
 Interior: Masonry/Metal  
 Roof: Metal

**Facilities**

Dock High Doors: 3  
 Dimensions: 8'x9'  
 Drive-In Doors: 1  
 Dimensions: 10'x12'  
 Overhead Cranes: 0  
 Parking Spaces: 100

**Utilities**

Electrical Service: Co-op Utility  
 Water Service: City of Rome  
 Sewer Service: City of Rome  
 Natural Gas Service: National Grid  
 Telecom Service: Adelphia

**Access**

Closest Highway: State Hwy 365  
 Miles to Highway: 1.11  
 Closest Interstate: I 90  
 Miles to Interchange: 6.53  
 Access Road: Wright Drive-Ellsworth Drive  
 Rail Service: Yes  
 Closest Airport(s): Oneida County

**Contacts**

**NY State ESD: Jim Jacob**  
 Email: [JJacob@empire.state.ny.us](mailto:JJacob@empire.state.ny.us)  
 Phone: (518) 292-5200  
 Fax: (518) 292-5810

Property ID: MV-13 Last Updated: 5/16/2005 12:32:11 AM